

Phone : +(242) 05 377 95 54
+(242) 05 377 95 64
AFTN : FCCCNYX
E-mail : bnibrazza@yahoo.fr
aim-fccc@asecna.org
Web : https://aim.asecna.aero



**BUREAU NOTAM INTERNATIONAL
DE L'AFRIQUE CENTRALE**

B.P. 660 BRAZZAVILLE - CONGO

CAMEROUN – CENTRAFRIQUE – CONGO – GABON – GUINEE ÉQUATORIALE – SAO TOME – TCHAD

AIRAC AIP SUP

NR 45/B/26FC

11 JUN 2026

LAMBARENE/ Georges RAWIRI - FOGR

MISE A JOUR DES PROCEDURES DE VOL IFR *IFR FLIGHT PROCEDURES UPDATE*

Effective date	09 JUL 2026
Validity	PERM

Ce SUP d'AIP informe les usagers sur la mise à jour des procédures de vol IFR de l'aérodrome de LAMBARENE/ Georges RAWIRI

This AIP SUP informs users of the update of IFR flight procedures at LAMBARENE/ Georges RAWIRI aerodrome

ASECNA AIP MODIFY PAGES

07AD2-FOGR-IAC-RNP 04
07AD2-FOGR-IAC-RNP 04-DATA
07AD2-FOGR-IAC-RNP 22
07AD2-FOGR-IAC-RNP 22-DATA

***CE SUP AIP COMPORTE 01 PAGE ET 04 ANNEXES /
THIS AIP SUP HAS 01 PAGE AND 04 ANNEXES***

**INSTRUMENT
APPROACH
CHART-ICAO**

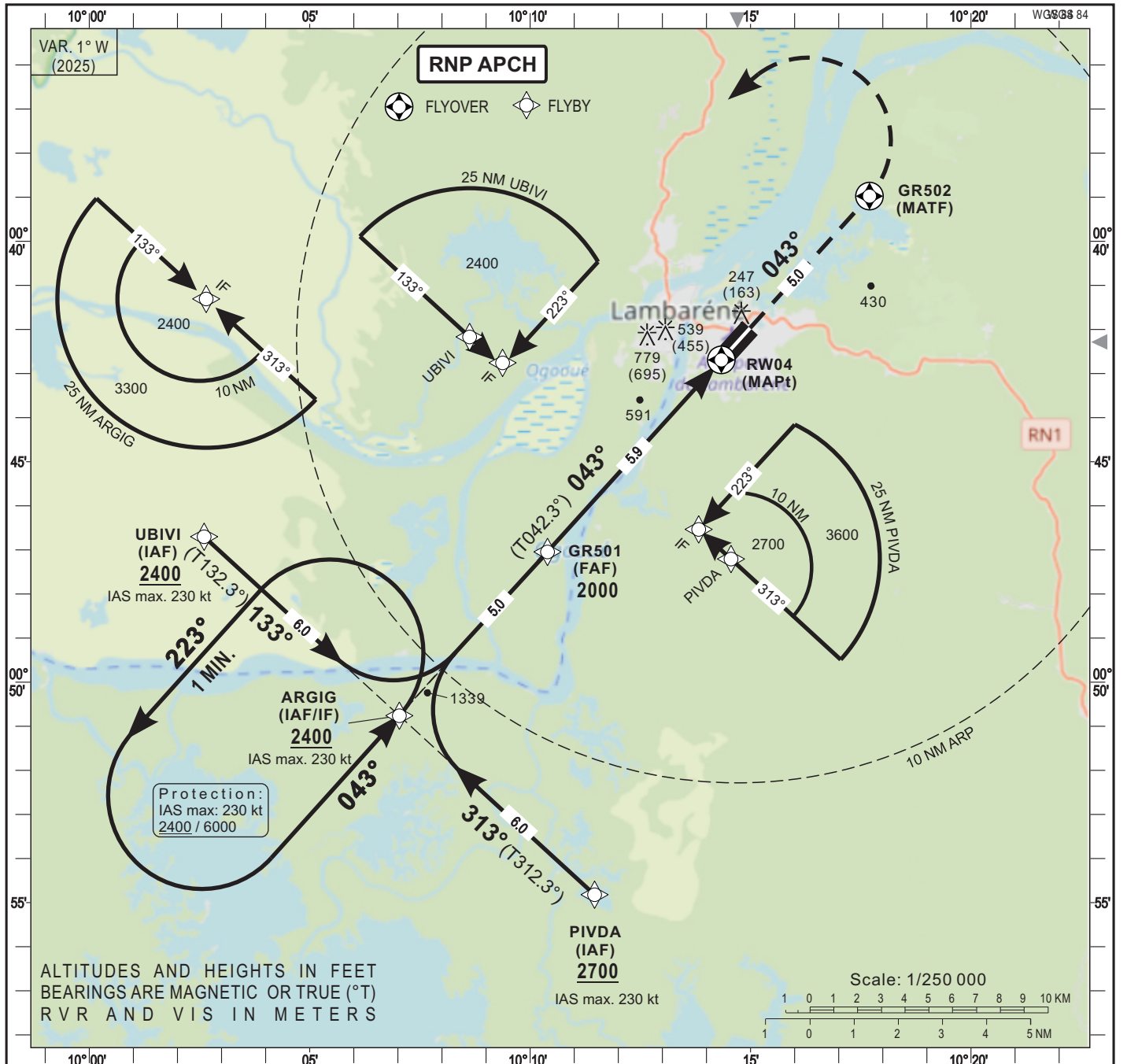
AERODROME ELEV 86 FT

HEIGHTS RELATED TO THR RWY04 - ELEV 84 FT

AFIS 118.6

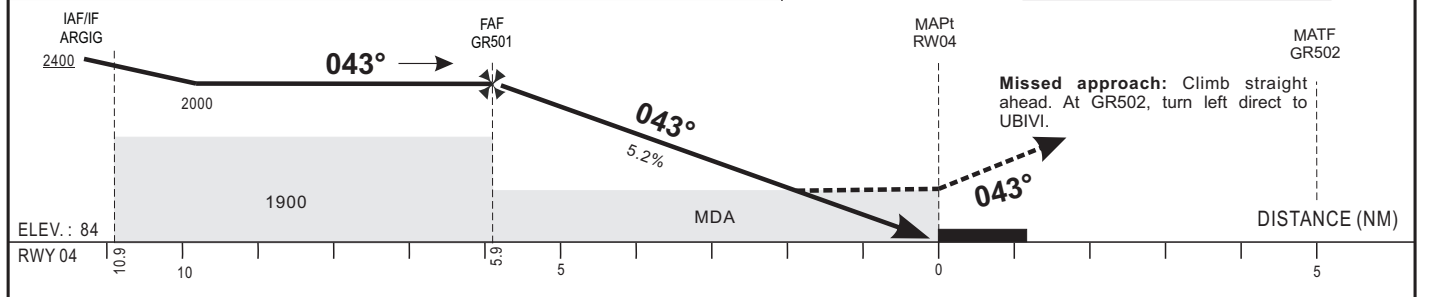
LAMBARENE / Georges RAWIRI (FOGR)

RNP - RWY 04
(ACFT CAT A, B, C)



Distance to THR (NM)	FAF	5	4	3	2
Altitude (ft)	2000	1730	1410	1090	780

TRANSITION ALTITUDE : 6000



CAT	LNAV				Circling 1				RVR for take-off: CATA-B-C: 400
	OCA (OCH)	MDA	MDH	RVR	OCA (OCH)	MDA	MDH	VIS	
A				1500	835 (749)	840 (750)		1500	Timing FAF / THR 5.9 NM KT MIN SEC KT MIN SEC 90 3 Min 56 140 2 Min 32 100 3 Min 32 150 2 Min 22 110 3 Min 13 160 2 Min 13 120 2 Min 57 170 2 Min 05 130 2 Min 43 180 1 Min 58
B	633 (549)	640 (550)		1500	1075 (989)	1080 (1000)		1600	
C				2000	1173 (1087)	1630 (1090)		2400	

Notes: - RDH : 15 m
1 Daytime only

CORRECTIONS : AD Name

TABULAR DESCRIPTION

RNP RWY 04

Serial Number	Path Descriptor	Waypoint Identifier	Fly-Over	Course °M(°T)	Magnetic Variation	Distance (NM)	Turn Direction	Altitude (ft)	Speed limit (Kt)	VPA / TCH	Navigation Specification
10	IF	UBIVI	-					+2400	-230	-	RNP APCH
20	TF	ARGIG	-	133(132.3)		6.0		+2400	-230	-	RNP APCH
10	IF	PIVDA	-					+2700	-230	-	RNP APCH
20	TF	ARGIG	-	313(312.3)		6.0		+2400	-230	-	RNP APCH
10	IF	ARGIG	-					+2400	-230	-	RNP APCH
20	TF	GR501	-	043(042.3)		5.0		@2000	-	-	RNP APCH
30	TF	RW04	Y	043(042.3)	+1.0	5.9		@134	-	-3/15	RNP APCH
40	CF	GR502	Y	043(042.3)			L	-	-230	-	RNP APCH
50	DF	UBIVI	-					+2400	-230		RNP APCH
10	IF	ARGIG	-					+2400	-230	-	RNP APCH
20	HM	ARGIG	Y	043(042.3)			L	+2400	-230	-	RNP APCH

RNP RWY 04		
Waypoint Identifier	Coordinates	
UBIVI	00°46'42.109"S	010°02'36.286"E
ARGIG	00°50'45.700"S	010°07'02.002"E
PIVDA	00°54'49.286"S	010°11'27.727"E
GR501	00°47'02.797"S	010°10'23.653"E
RW04	00°42'41.346"S	010°14'20.166"E
GR502	00°38'58.437"S	010°17'41.804"E

CORRECTIONS : AD Name

**INSTRUMENT
APPROACH
CHART-ICAO**

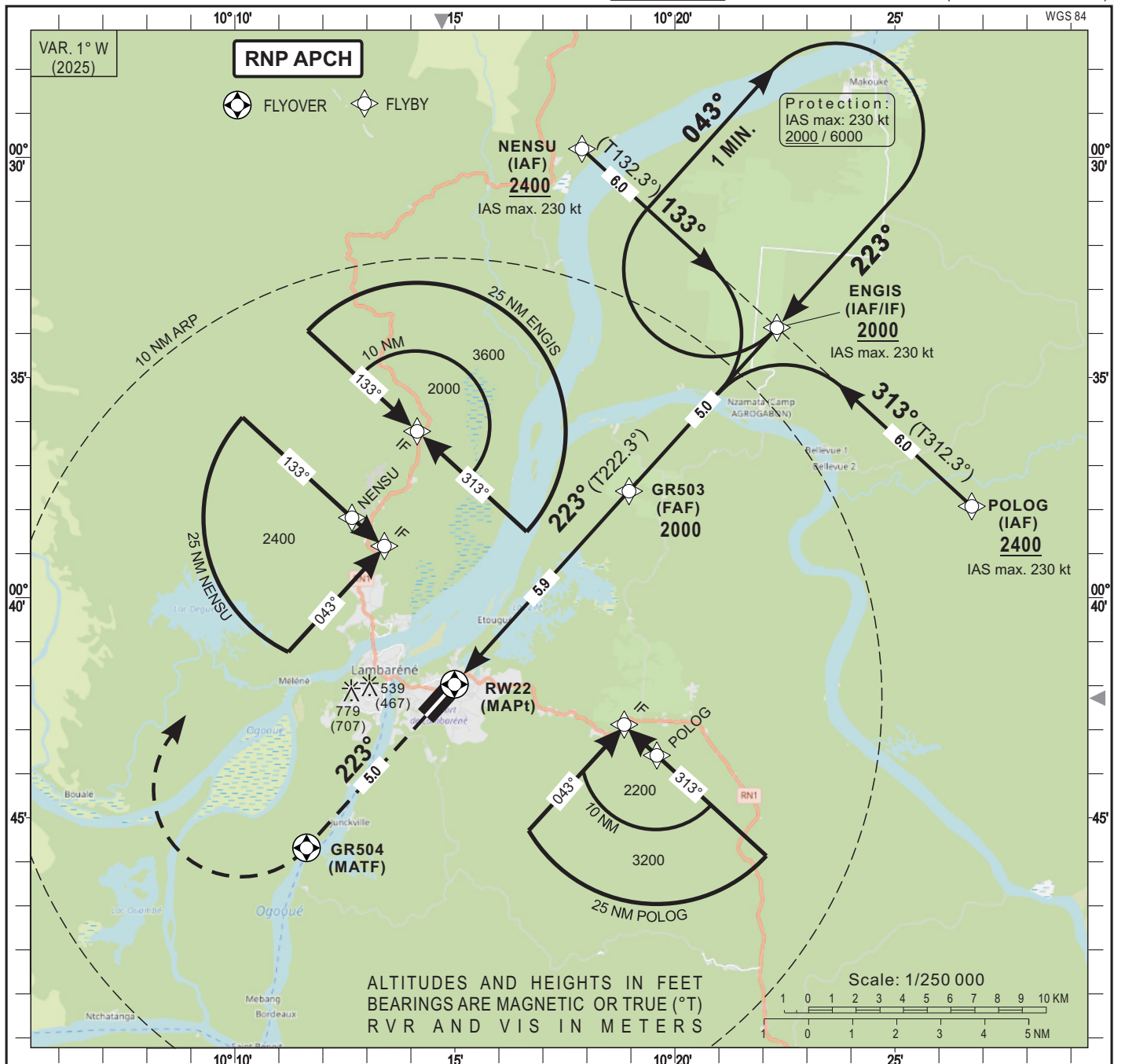
AERODROME ELEV 86 FT

HEIGHTS RELATED TO THR RWY22 - ELEV 72 FT

AFIS 118.6

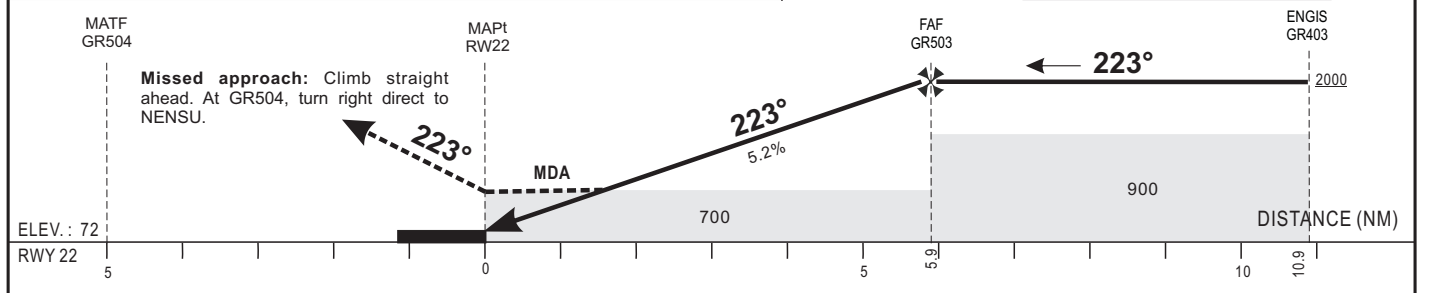
LAMBARENE / Georges RAWIRI (FOGR)

RNP - RWY 22
(ACFT CAT A, B, C)



Distance to THR (NM)	FAF	5	4	3	2
Altitude (ft)	2000	1720	1400	1080	760

TRANSITION ALTITUDE : 6000



CAT	LNAV			Circling 1			VH	RVR for take-off: CATA-B-C : 400
	OCA (OCH)	MDA	MDH	RVR	OCA (OCH)	MDA		
A				1500	835 (749)	840 (750)	1500	Timing FAF / THR 5.9 NM KT MIN SEC KT MIN SEC 90 3 Min 56 140 2 Min 32 100 3 Min 32 150 2 Min 22 110 3 Min 13 160 2 Min 13 120 2 Min 57 170 2 Min 05 130 2 Min 43 180 1 Min 58
B	693 (621)	700 (630)		1500	1075 (989)	1080 (1000)	1600	
C				2000	1173 (1087)	1630 (1090)	2400	

Notes : - RDH : 15 m
1 Daytime only

CORRECTIONS : AD Name

TABULAR DESCRIPTION

RNP RWY 22

Serial Number	Path Descriptor	Waypoint Identifier	Fly-Over	Course °M(°T)	Magnetic Variation	Distance (NM)	Turn Direction	Altitude (ft)	Speed limit (Kt)	VPA / TCH	Navigation Specification
10	IF	NENSU	-					+2400	-230	-	RNP APCH
20	TF	ENGIS	-	133(132.3)		6.0		+2000	-230	-	RNP APCH
10	IF	POLOG	-					+2400	-230	-	RNP APCH
20	TF	ENGIS	-	313(312.3)		6.0		+2000	-230	-	RNP APCH
10	IF	ENGIS	-					+2400	-230	-	RNP APCH
20	TF	GR503	-	223(222.3)		5.0		@2000	-	-	RNP APCH
30	TF	RW22	Y	223(222.3)	+1.0	5.9		@122	-	-3/15	RNP APCH
40	CF	GR504	Y	223(222.3)		5.0	R	-	-230	-	RNP APCH
50	DF	NENSU	-					+2400	-230		RNP APCH
10	IF	ENGIS	-					+2000	230	-	RNP APCH
20	HM	ENGIS	Y	223(222.3)			R	+2000	-230	-	RNP APCH

RNP RWY 22		
Waypoint Identifier	Coordinates	
NENSU	00°29'48.404"S	010°17'53.294"E
ENGIS	00°33'51.979"S	010°22'19.009"E
POLOG	00°37'55.552"S	010°26'44.729"E
GR503	00°37'34.891"S	010°18'57.377"E
RW22	00°41'58.037"S	010°14'59.343"E
GR504	00°45'40.944"S	010°11'37.700"E